

Tradition Cemetery

562 South "I" Street

San Bernardino, CA 92410

www.traditioncemetery.com

(909) 383-1560

"A Place of Value, to Cherish and Honor your Loved Ones"



COA#638



TRADITION CEMETERY

562 S. I STREET, SAN BERNARDINO, CA 92410

PHONE (909) 383-1560 FAX (909) 383-1205

WWW.TRADITIONCEMETERY.COM

PRICE LIST

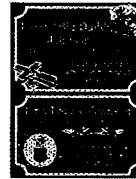
Prices effective January 1, 2019 and are subject to change without notice.

#1 LOCATION: GABLES

6" X 8" MARKER FOR SINGLE SPACE



6" X 8" COMPANION MARKER FOR DOUBLE SPACES



Single Niche / One Marker

Niche Space Rights (Property) **\$2,185**
 Endowment Care - **\$80**
 Marker with Standard Inscription - \$50
 Container Insert - \$20
 Opening & Closing - \$50
 Department of Consumer Affairs - \$8.50

Total \$ 2,393.50

Financing on: (Property & Endowment Care)
 Preneed Total = \$2,265.00
 20% Down Payment = [\$453.00]
 Financed Amount = \$1,812.00
 8% Finance Charge = \$116.92
18 Monthly Payments = \$107.16

Double Niche / One Companion Marker

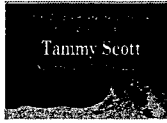
2 Niche Space Rights (Property) **\$3,220** (\$1,610 per niche)
 Endowment Care - **\$160** (2 @ \$80 per niche)
 Single Marker with (2) Standard Inscriptions - \$100
 Container Insert - \$40 (2 @ \$20 per niche)
 Open & Closing - \$100 (2 @ \$50 per niche)
 Department of Consumer Affairs - \$17.00 (2 @ \$8.50)

Total \$ 3,637.00

Financing on: (Property & Endowment Care)
 Preneed Total = \$3,380.00
 20% Down Payment = [\$676.00]
 Financed Amount = \$2,704.00
 8% Finance Charge = \$174.48
18 Monthly Payments = \$159.92

#2 LOCATION: VILLAS

6" X 8" MARKER FOR SINGLE SPACE



Single Niche / One Marker

Niche Space Rights (Property) **\$1,845**
Endowment Care - **\$80**
Marker with Standard Inscription - \$50
Container Insert - \$20
Opening & Closing - \$50
Department of Consumer Affairs - \$8.50

Total \$ 2,053.50

Financing on: (Property & Endowment Care)

Preneed Total = \$1,925.00
20% Down Payment = [\$385.00]
Financed Amount = \$1,540.00
8% Finance Charge = \$99.37
18 Monthly Payments = \$91.08

6" X 8" COMPANION MARKER FOR DOUBLE SPACES



Double Niche / One Companion Marker

2 Niche Space Rights (Property) **\$2,650** (\$1,325 per niche)
Endowment Care - **\$160** (2 @ \$80 per niche)
Single Marker with (2) Standard Inscriptions - \$100
Container Insert - \$40 (2 @ \$20 per niche)
Open & Closing - \$100 (2 @ \$50 per niche)
Department of Consumer Affairs - \$17.00

Total \$ 3,067.00

Financing on: (Property & Endowment Care)

Preneed Total = \$2,810.00
20% Down Payment = [\$562.00]
Financed Amount = \$2,248.00
8% Finance Charge = \$145.05
18 Monthly Payments = \$132.95

#3 LOCATION: OLIVE COURT

7" X 12" MARKER FOR SINGLE SPACE



Single Niche / One Marker

Niche Space Rights (Property) **\$1,695**
Endowment Care - **\$80**
Marker with Standard Inscription - \$50
Container Insert - \$20
Opening & Closing - \$50
Department of Consumer Affairs - \$8.50

Total \$ 1,903.50

Financing on: (Property & Endowment Care)

Preneed Total = \$1,775.00
20% Down Payment = [\$355.00]
Financed Amount = \$1,420.00
8% Finance Charge = \$91.63
18 Monthly Payments = \$83.98

7" X 12" COMPANION MARKER FOR DOUBLE SPACES



Double Niche / One Companion Marker

2 Niche Space Rights (Property) **\$2,440** (\$1,220 per niche)
Endowment Care - **\$160** (2 @ \$80 per niche)
Single Marker with (2) Standard Inscriptions - \$100
Container Insert - \$40 (2 @ \$20 per niche)
Open & Closing - \$100 (2 @ \$50 per niche)
Department of Consumer Affairs - \$17.00

Total \$ 2,857.00

Financing on: (Property & Endowment Care)

Preneed Total = \$2,600.00
20% Down Payment = [\$520.00]
Financed Amount = \$2,080.00
8% Finance Charge = \$134.21
18 Monthly Payments = \$123.01

#4 Location: VISTA MEADOWS

6" X 8" MARKER FOR SINGLE SPACE



Single Niche / One Marker

Niche Space Rights (Property) **\$1,235**
Endowment Care - **\$80**
Marker with Standard Inscription - \$50
Container Insert - \$20
Opening & Closing - \$50
Department of Consumer Affairs - \$8.50

Total \$ 1,443.50

Financing on: (Property & Endowment Care)
Preneed Total = \$1,315
20% Down Payment = [\$263.00]
Financed Amount = \$1,052.00
8% Finance Charge = \$67.88
18 Monthly Payments = \$62.22

6" X 8" COMPANION MARKER FOR DOUBLE SPACES



Double Niche / One Marker

2 Niche Space Rights (Property) **\$1,700** (\$850 per niche)
Endowment Care - **\$160** (2 @ \$80 per niche)
Single Marker with (2) Standard Inscriptions - \$100
Container Insert - \$40 (2 @ \$20 per niche)
Open & Closing - \$100 (2 @ \$50 per niche)
Department of Consumer Affairs - \$17.00

Total \$ 2,117.00

Financing on: (Property & Endowment Care)
Preneed Total = \$1,860.00
20% Down Payment = \$372.00
Financed Amount = \$1,488.00
8% Finance Charge = \$96.01
18 Monthly Payments = \$88.00

#5 LOCATION: VILLAS

3 1/4" X 6" MARKER FOR SINGLE SPACE



Single Niche / One Marker

Niche Space Rights (Property) **\$1,210**
Endowment Care - **\$80**
Marker with Standard Inscription - \$50
Container Insert - \$20
Open & Closing - \$50
Department of Consumer Affairs - \$8.50

Total \$ 1,418.50

Financing on: (Property & Endowment Care)
Preneed Total = \$1,290.00
20% Down Payment = [\$258.00]
Financed Amount = \$1,032.00
8% Finance Charge = \$66.59
18 Monthly Payments = \$61.03

#6 LOCATION: VISTA MEADOWS

3 1/4" X 6" MARKER FOR SINGLE SPACE



Single Niche / One Marker

Niche Space Rights (Property) **\$975**
Endowment Care - **\$80**
Marker with Standard Inscription - \$50
Container Insert - \$20
Open & Closing - \$50
Department of Consumer Affairs - \$17.00

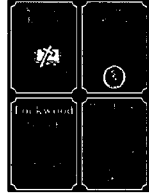
Total \$ 1,192.00

Financing on: (Property & Endowment Care)
Preneed Total = \$1,055.00
20% Down Payment = [\$211.00]
Financed Amount = \$845.00
8% Finance Charge = \$54.52
18 Monthly Payments = \$49.97

#7 Location: VISTA MEADOWS

FOUR SHARED SPACES ON A SINGLE 6" X 8" COMMUNITY MARKER

SPACES REQUIRE A STANDARD-SIZED PLASTIC URN



Single Niche Space /Shared Marker (1 of 4 sections)

Niche Space Rights (Property) **\$675**
Endowment Care - **\$80**
Shared Marker with (1) Standard Inscription - \$50
Container Insert - \$20
Opening & Closing - \$50
Department of Consumer Affairs - \$8.50

Total \$ 883.50

Financing on: (Property & Endowment Care)
Preneed Total = \$755.00
20% Down Payment = [\$151.00]
Financed Amount = \$604.00
8% Finance Charge = \$38.97
18 Monthly Payments = \$35.72

Two Niche Spaces / Shared Marker (2 of 4 sections)

Niche Space Rights (Property) **\$1300** (\$650 per niche)
Endowment Care - **\$160** (2 @ \$80 per niche)
Shared Marker with (2) Standard Inscriptions - \$100
Container Insert - \$40 (2 @ \$20 per niche)
Open & Closing - \$100 (2 @ \$50 per niche)
Department of Consumer Affairs - \$17.00

Total \$ 1,717.00

Financing on: (Property & Endowment Care)
Preneed Total = \$1,460.00
20% Down Payment = [\$292.00]
Financed Amount = \$1,168.00
8% Finance Charge = \$75.37
18 Monthly Payments = \$69.08

Three Niche Spaces /Shared Marker (3 of 4 sections)

Niche Space Rights (Property) **\$1800** (\$600 per niche)
Endowment Care - **\$240** (3 @ \$80 per niche)
Shared Marker with (3) Standard Inscription - \$150
Container Insert - \$60 (3 @ \$20 per niche)
Opening & Closing - \$150 (3 @ \$50 per niche)
Department of Consumer Affairs - \$25.50 (3 @ \$8.50)

Total \$ 2,185.50

Financing on: (Property & Endowment Care)
Preneed Total = \$2,040.00
20% Down Payment = [\$408.00]
Financed Amount = \$1,632.00
8% Finance Charge = \$105.31
18 Monthly Payments = \$96.52

Four Niche Spaces /Shared Marker (4 of 4 sections)

Niche Space Rights (Property) **\$2200** (\$550 per niche)
Endowment Care - **\$320** (4 @ \$80 per niche)
Shared Marker with (4) Standard Inscriptions - \$200
Container Insert - \$80 (4 @ \$20 per niche)
Open & Closing - \$200 (4 @ \$50 per niche)
Department of Consumer Affairs - \$34.00 (4 @ \$8.50)

Total \$ 2,714.00

Financing on: (Property & Endowment Care)
Preneed Total = \$2,520.00
20% Down Payment = [\$504.00]
Financed Amount = \$2,016.00
8% Finance Charge = \$130.08
18 Monthly Payments = \$119.23

#8 Location: VISTA MEADOWS

EIGHT OR SIX SHARED SPACES ON A SINGLE 6" X 8" COMMUNITY MARKER

SPACES REQUIRE A STANDARD-SIZED PLASTIC URN

ONE OF EIGHT OR ONE OF SIX SHARED SPACES ON A SINGLE 6 X 8" COMMUNITY MARKER

Single Niche (each space) / Shared Marker

Niche Space Rights (Property) \$525

Shared Marker with (1) Standard Inscription - \$50

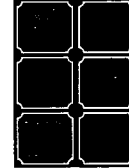
Container Insert - \$20

Opening & Closing - \$50

Endowment Care - \$80

Department of Consumer Affairs - \$8.50

(1 of 8 sections) or (1 of 6 sections)



Total \$ 733.50

Financing on: (Property & Endowment Care)

Preneed Total = \$605.00

20% Down Payment = [\$121.00]

Financed Amount = \$484.00

8% Finance Charge = \$31.23

18 Monthly Payments = \$28.62

#9 LOCATION: VILLAS

CENOTAPH WALL MEMORIALS

Non-Interment Memorialization

7" X 11" SINGLE MARKER



Marker Wall Space - \$345

Marker with Standard Inscription - \$50

Endowment Care - No fee

Total \$ 395.

7" X 11" COMPANION MARKER



Marker Wall Space - \$345

Shared Marker with (2) Standard Inscriptions - \$100

Endowment Care - No fee

Total \$ 445.

MISCELLANEOUS ITEMS & SERVICES

Memorial Service /Service Set Up for a Cemetery Service	\$ 495.
Witness Lowering (Immediate Interment with family present), Additional	\$ 450.
Saturday/Sunday/Holiday held on or before 11:00 AM, additional	\$ 900.
Saturday/Sunday/Holiday held after 11:00 AM up to 3:00 PM, additional	\$1100.
After hours Interments / Services (Arrival after 3:00 PM), (Add to above Sat, Sun, Holiday fee when applicable)	\$ 200.
Marker Custom Graphic Designs, each design	\$ 100.
Marker Photo Etch Designs (Your Photo)	\$ 100.
Second Inscription on Companion Marker (2 nd person interment), additional	\$ 50.
Additional Inscription on Marker after setting has taken place, per family request	\$ 150.
Redo Marker with New Inscription/Design at the families' request	\$ 300.
Placement of Cremated Remains in urn provided by family	\$ 50.
Transfer of Interment Rights	\$ 50.
Disinterment	\$ 350.